

# **RAPIXX 4343M2F Wifi Set RAPIXX 4336M2F Wifi Set**

## **Digital X-ray detector system**

**Model/ID: 4497-9-0000L  
4498-9-0000L**

## **Installation & User Manual**

Ident. Nr. 5448-0-0004



# **CE0297**

© 2016 PROTEC GmbH & Co. KG, Oberstenfeld

Comments and questions about the documentation please contact:

**PROTEC GmbH & Co. KG**

In den Dorfwiesen 14 | 71720 Oberstenfeld  
Germany

**Tel: (+ 49) 7062 – 92 55 0**

**Fax: (+ 49) 7062 – 22 68 5**

**E-Mail: [protec@protec-med.com](mailto:protec@protec-med.com)**

**Internet: [www.protec-med.com](http://www.protec-med.com)**

## Table of contents

	Page
<b>Table of contents</b> .....	<b>3</b>
<b>Document Version</b> .....	<b>5</b>
<b>Mechanical and Electrical Warning</b> .....	<b>6</b>
<b>Radiation Warning</b> .....	<b>6</b>
<b>To the User</b> .....	<b>6</b>
<b>Improvement Recommendations</b> .....	<b>6</b>
<b>1 General</b> .....	<b>7</b>
1.1 Inspection of delivery packaging.....	7
1.2 Inspection of the scope of delivery .....	7
1.3 System requirements .....	7
1.4 Environmental Conditions .....	7
1.4.1 Operating Conditions.....	7
1.4.2 Storage Conditions.....	7
<b>2 Description of the RAPIXX DR-systems</b> .....	<b>8</b>
2.1 Common Description .....	8
2.2 Intended Use .....	8
2.3 Intended User Group.....	8
2.4 Combination with other products.....	8
<b>3 Important notes for the preparation of the detector installation</b> .....	<b>9</b>
3.1 General Information.....	9
3.2 Notes for installing a new digital X-ray system .....	9
3.3 Notes for upgrading an existing CR- or analogue X-ray system.....	9
<b>4 Installation</b> .....	<b>10</b>
4.1 Check list .....	10
4.2 Prepare the MP-Box.....	10
4.3 Connection of the components.....	12
4.4 Setup the network .....	13
4.5 Configure the WiFi Access point.....	14
4.5.1 LAN configuration.....	14
4.5.2 WiFi configuration .....	14
4.6 Change Windows settings .....	15
4.6.1 Deactivate the User Account Control.....	15
4.6.2 Activate Windows features.....	15
4.6.3 Setup the Windows Firewall.....	15
4.7 Installation of the Detector DVD .....	16
4.8 Change the user group.....	17
4.9 Installation of CONAXX 2 .....	17
4.10 Configuration of the detector.....	17
4.10.1 Synchronization .....	18
4.10.2 Wifi.....	18
4.10.3 Register the detector .....	18
4.11 First start of CONAXX 2.....	19
4.11.1 Necessary settings in CONAXX 2.....	19
4.11.2 Licensing of CONAXX 2 .....	19
4.12 Setup dose indicator for detector .....	20
<b>5 Calibration of the DR System</b> .....	<b>21</b>
<b>6 Status information</b> .....	<b>23</b>
6.1 Status LEDs of the detector .....	23
6.2 Status area of CONAXX 2 .....	23
<b>7 Handling of the RAPIXX 4343M2F Wifi system</b> .....	<b>24</b>
7.1 Operation of the RAPIXX DR system .....	24

7.1.1	Startup order for daily use .....	24
7.1.2	Error during operation with the X-ray generator .....	24
7.1.3	Error during operation with the modality .....	24
7.2	Operation of the CONAXX 2 software .....	25
7.3	Operation of the detector with accessories .....	25
7.3.1	Handling and change of the battery .....	25
<b>8</b>	<b>Safety and Maintenance .....</b>	<b>26</b>
8.1	Introduction .....	26
8.2	Cleaning and disinfection .....	26
8.3	Checkup and maintenance .....	26
8.3.1	Daily controls prior to or during the unit operation .....	26
8.3.2	Safety-related controls .....	26
8.3.3	Maintenance .....	26
<b>9</b>	<b>Liability .....</b>	<b>27</b>
<b>10</b>	<b>Guarantee .....</b>	<b>27</b>
<b>11</b>	<b>Disposal .....</b>	<b>27</b>
<b>12</b>	<b>Electromagnetic compatibility (EMC) according to EN 60601-1-2 .....</b>	<b>27</b>
12.1	General .....	27
12.2	Detector with accessories .....	27
<b>13</b>	<b>Description of symbols and abbreviations .....</b>	<b>28</b>
13.1	Symbols .....	28
13.2	Abbreviations .....	28

## Note

The information contained in this document conforms to the configuration of the equipment as of the date of manufacture. Revisions to the equipment subsequent to the date of manufacture will be addressed in service notes distributed by PROTEC GmbH & Co.KG.

## Document Version

Revision	Date	List of revised pages	Comments
1.0	June 2015	---	First edition Installation Manual
2.0	29/01/2016	all	Widening to Installation and User Manual
3.0	04/05/2016	6, 9, 23, 24, 26, 28	Safety instructions, chapter 13
4.0	Sept. 2016	6, 25	note residual risk, caution handling

## Mechanical and Electrical Warning

All of the **movable assemblies and parts of this equipment** should be operated with care and routinely inspected in accordance with the manufacturer's recommendations contained in the equipment accompanying documents. Maintenance and service is only to be performed by technicians authorized by **PROTEC GmbH & Co. KG**.

**Touching electrical live parts can be lethal.**

**Do not remove flexible high-tension cables from X-ray tube housing or high-tension generator and/or access covers from X-ray generator.**

For all components of the equipment protective earthing means must be provided in compliance with the national regulations.

**Failure to comply with the foregoing may result in serious or fatal bodily injuries to the operator or those in the area.**



**Caution! Electrostatic sensitive device.**

Handling instructions have to be respected!

## Radiation Warning

The component of the equipment described within this document is part of a system for the intended generation of X-rays for medical diagnosis.

X-rays generate a potential risk for both patients and operators.

For this reason the application of X-rays for a given medical purpose must aim at the minimization of radiation exposition to any persons.

Those persons responsible for the application must have the specific knowledge according to legal requirements and regulations and must establish safe exposure procedures for these kind of systems.

**Those persons responsible for the planning and installation of this equipment must observe the national regulations.**

## To the User

The user of this document is directed to read and carefully review the instructions, warnings and cautions contained herein prior to beginning operation, installation or service activities. While you may have previously operated equipment similar to that described in this document, changes in design, manufacture or procedure may have occurred which significantly affect the present operation.

The installation and service of equipment described herein is to be performed by authorized, qualified **PROTEC GmbH & Co. KG** technicians.

Although the product was subject to a risk analysis and the design corresponds to the current state of the art, residual risk will remain in clinical use. These are displayed in the following user manual by application limitations, contraindications, warnings and precautions.

Assemblers and other Customers not employed by nor directly affiliated with **PROTEC GmbH & Co. KG** technical services are directed to contact the local **PROTEC GmbH & Co. KG** office before attempting installation or service procedures.

## Improvement Recommendations

Users of this document are encouraged to report errors, omissions and improvement recommendations to **PROTEC GmbH & Co. KG**.

# 1 General

## 1.1 Inspection of delivery packaging

Check the packaging for any damages.

## 1.2 Inspection of the scope of delivery

Please check if the system has been completely delivered.

Following parts should be included:

- Detector RAPIXX 4343M2F Wifi or RAPIXX 4336M2F Wifi
- Battery charger with power supply
- 2 batteries
- WiFi Access point with power supply
- MP-Box (with 2 Ethernet cables for computer and WiFi Access point, 1 detector cable)
- Detector DVD
- CONAXX 2 CD

## 1.3 System requirements

For an optimal use of the DR detector, it is necessary that the hardware fulfil the system requirements described in the document "System requirements".

## 1.4 Environmental Conditions

### 1.4.1 Operating Conditions

Temperature: 15 °C – 30 °C

Humidity: 10% RH - 80% RH

Atmospheric pressure: 700 hPa – 1060 hPa



#### **Caution!**

**When the flat panel sensor is used in high temperature condition for long period of time, it may cause image artefacts and/or failure of the device.**

### 1.4.2 Storage Conditions

Temperature: 5 °C – 35 °C

Humidity: 15% RH - 80% RH

Atmospheric pressure: 700 hPa – 1060 hPa

## 2 Description of the RAPIXX DR-systems

### 2.1 Common Description

The digital X-ray detector systems of the RAPIXX series are assembled of single components, which are separate medical devices. To fulfil their intended use they must be combined together.

The system components are listed under point 1.2 in this manual.

The **RAPIXX 4343M2F Wifi** system and the **RAPIXX 4336M2F Wifi** system distinguish themselves only by the detector format. All installation and operation explanations are identical for both types.

### 2.2 Intended Use

The digital X-ray detector systems of the RAPIXX series are intended for acquisition, processing and data transfer of digital conventional X-ray images. They are used as a system component of digital X-ray systems, which are used in the diagnostic human medicine (e.g. radiology departments, orthopaedics, surgery, emergency surgery and urology) in a healthcare facility.

### 2.3 Intended User Group

The digital X-ray detector systems of the RAPIXX series are only intended for the usage by professional users, who are specially trained on the operation of diagnostic X-ray units, according to the correspondent national requirements and who are instructed to the appropriate operation (usage and operation as well as in the allowable connection with other medical devices, objects and accessories). Appropriate user groups could be radiologists, X-ray technicians, radiological assistants, medical technical radiographers, orthopaedics, surgeons, emergency surgeons, urologists and other medical trained staff.

### 2.4 Combination with other products

The digital X-ray detector systems of the RAPIXX series are subsystems, which must be put together/combined with other products to an X-ray system to fulfil their intended use.

#### Required combination products:

- High-frequency generator
- X-ray tube
- Collimator
- PC and monitor

#### Optional combination products:

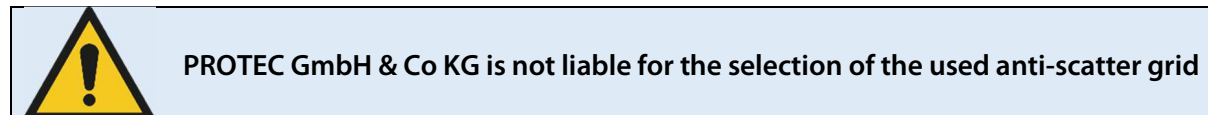
- Ionisation measuring chamber
- Anti-scatter grid
- Dose area product meter
- Bucky (for moving anti-scatter grid) / grid entity (for fixed anti-scatter grid)
- X-ray table
- X-ray stands (wall stand/table stand/ceiling suspension)
- PACS software



### 3 Important notes for the preparation of the detector installation

#### 3.1 General Information

- ☐ Do not use cable extensions
- ☐ Use only the delivered network cables or at least CAT 6 cables
- ☐ Anti-scatter grid:
  - Use grid with ratio 12:1 and 40 lines/cm
  - For radiology use source image distance (SID) 120cm and 180cm. For orthopaedics use 120cm SID or 150 cm if chest X-rays are taken as well. Just one grid for all SIDs is not sufficient.



#### 3.2 Notes for installing a new digital X-ray system

- ☐ The generator cut-off dose should be in the range between 3.0 and 3.3 $\mu$ Gy.

#### 3.3 Notes for upgrading an existing CR- or analogue X-ray system

- ☐ Increase the generator cut-off dose to 3.2 $\mu$ Gy at least.
- ☐ Adjust the values of the organ programs for exposures under table, which had been exposed on the table before.
- ☐ Check all old components on site which are located inside the ray path:
  - ☐ Replace wood cover plate by new cover plate made of carbon
  - ☐ Use state-of-the-art HF generators
  - ☐ Check grounding of detector grid entity/Bucky and panel
  - ☐ Check the swivel of swivel arm installations if there are any kinks in the cables
  - ☐ Check measurement chamber if it is capable for DR

## 4 Installation

### 4.1 Check list

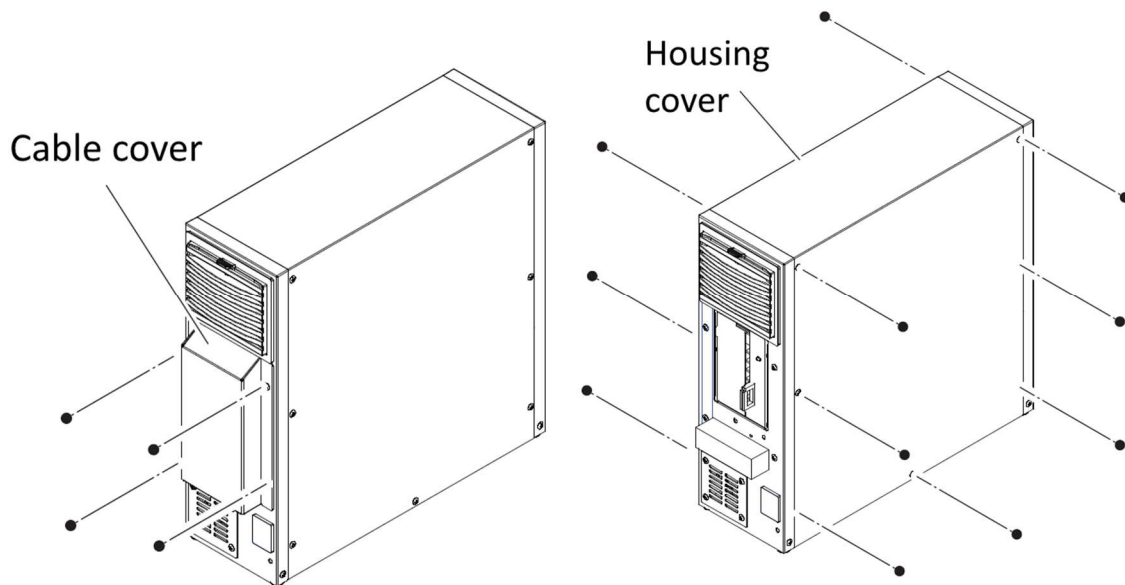
If PROTEC GmbH & Co. KG already prepared the installation, only the following sub-chapter from this chapter must be considered:

#### ❑ 4.3 Connection of the components

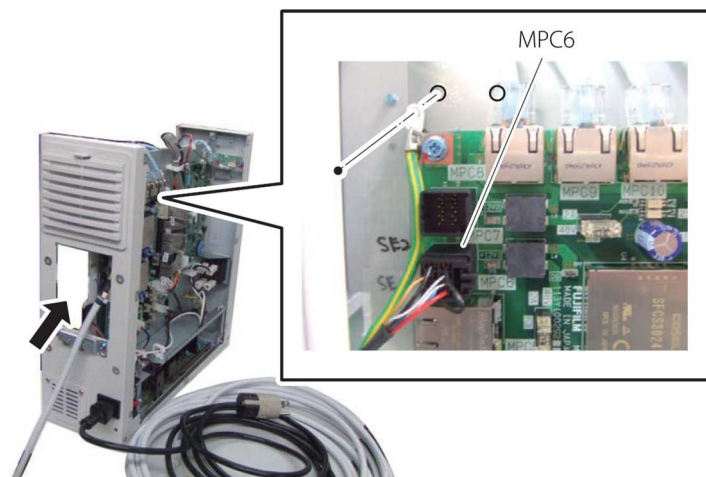
Then proceed with chapter 5 *Calibration of the DR System* on page 21.

### 4.2 Prepare the MP-Box

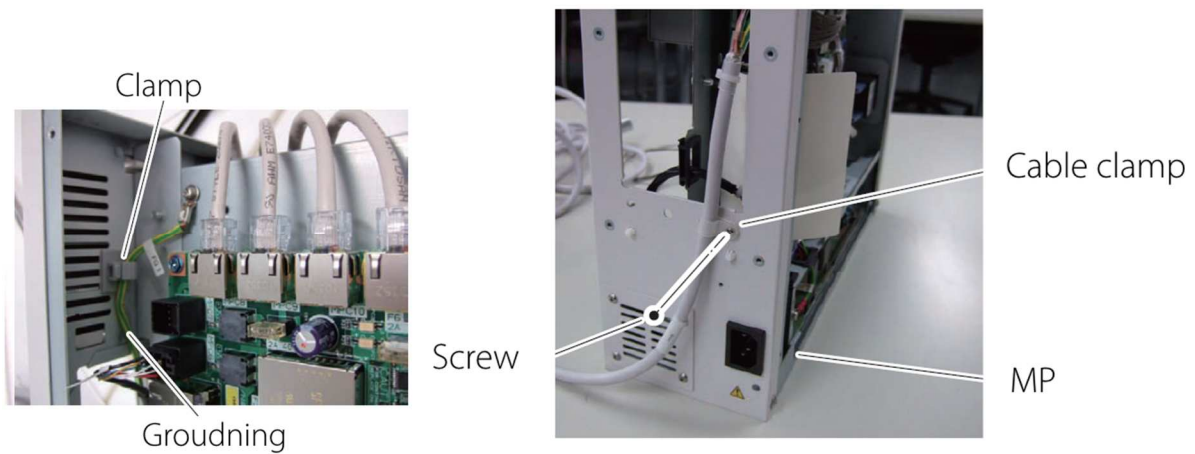
Remove the cable and housing cover by loosening the screws:



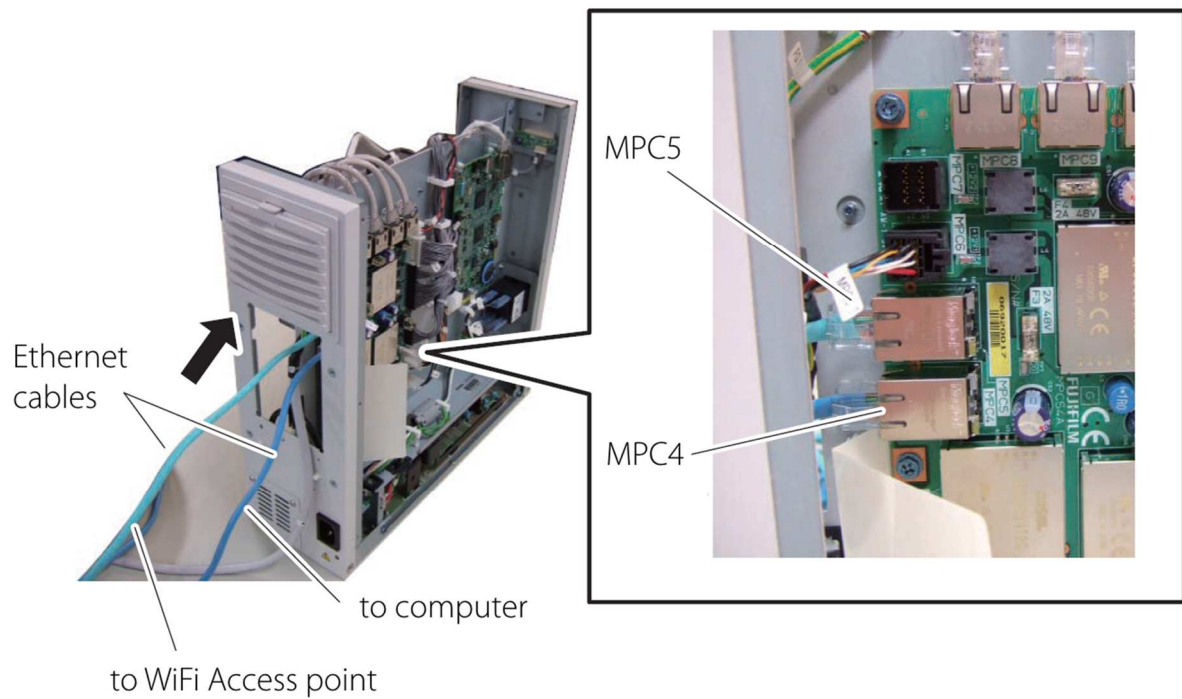
Connect the detector cable to MPC6 together and fix the grounding:



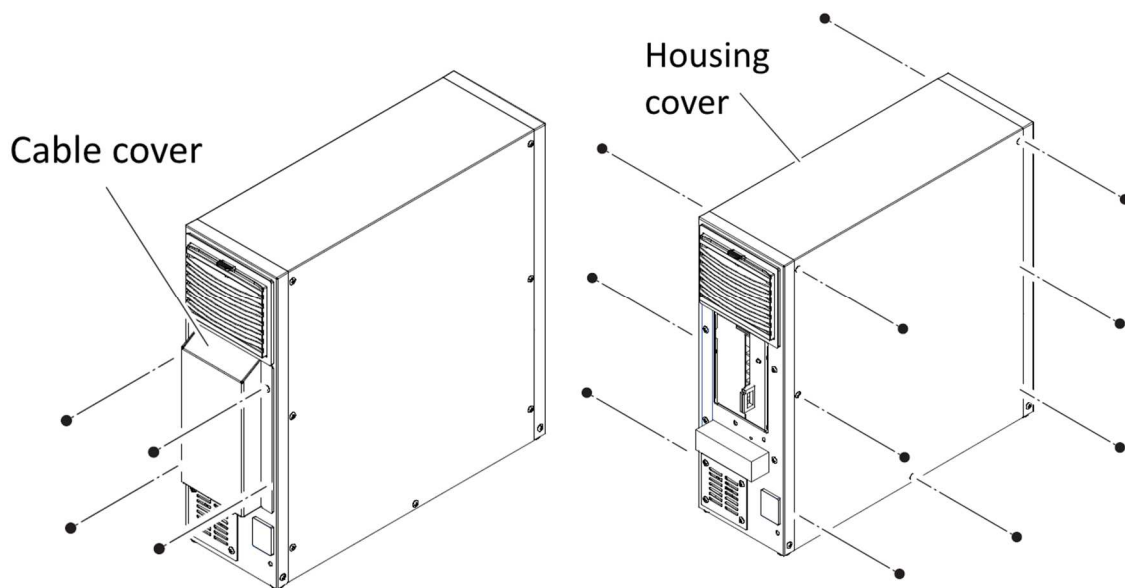
Fix the cable clamp for the detector cable:



Connect the cables for computer and WiFi Access point:

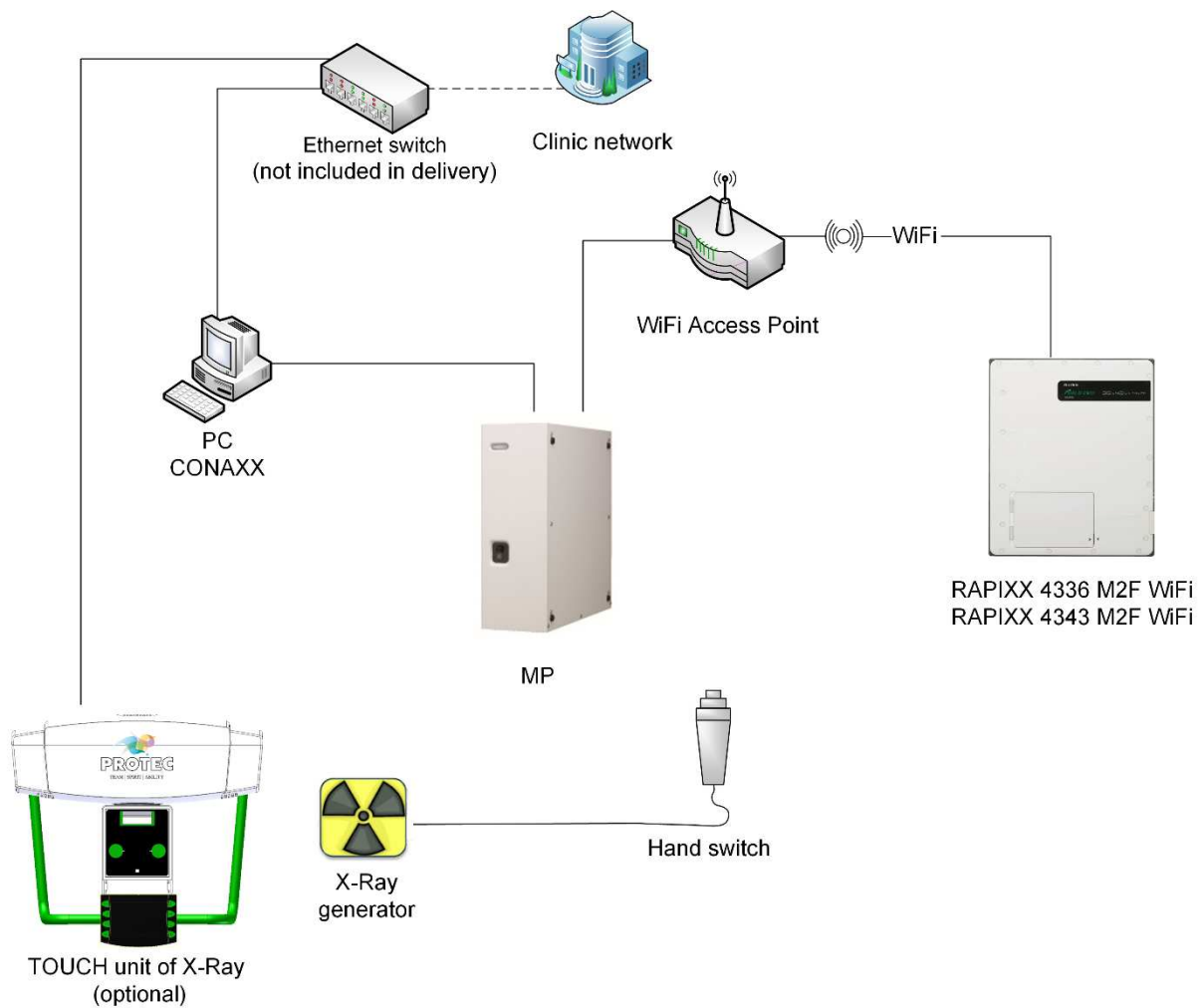


Close the cable and housing cover of the MP-Box:

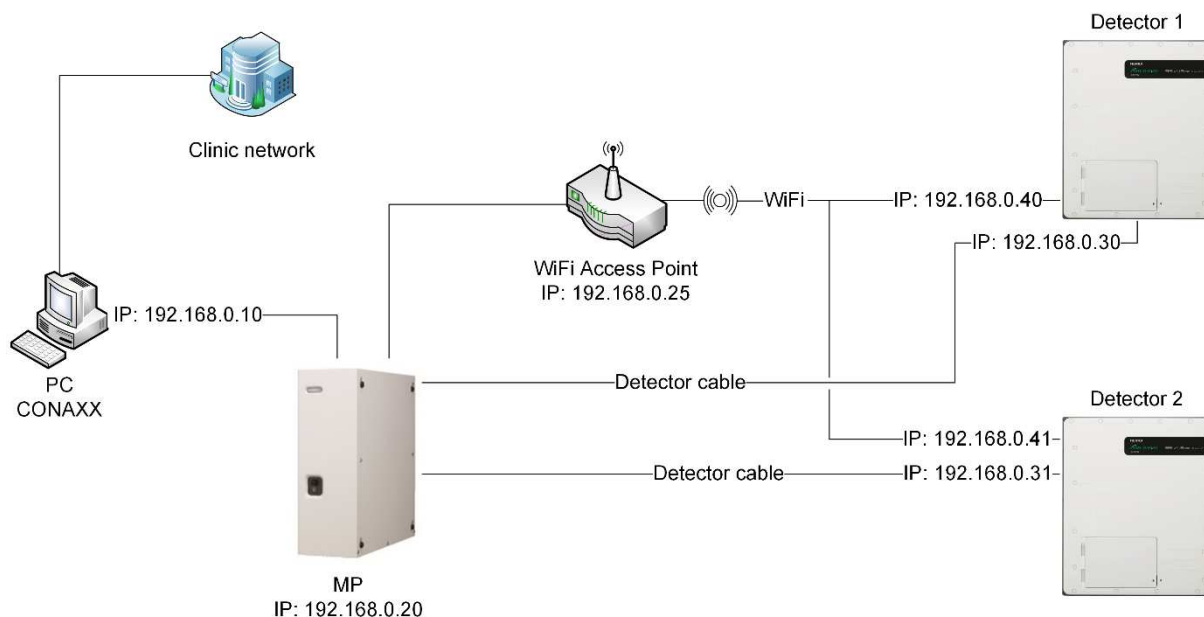


### 4.3 Connection of the components

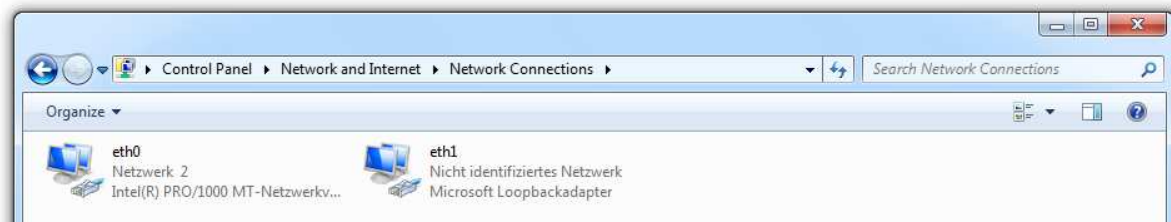
Connect the components as described in the following diagrams.



## 4.4 Setup the network



Open the "WINDOWS CONTROL PANEL", open "NETWORK AND SHARING CENTER" and afterwards "CHANGE ADAPTER SETTINGS". Rename the adapter for the clinic network to "eth0". Rename the adapter for the MP-Box to "eth1".

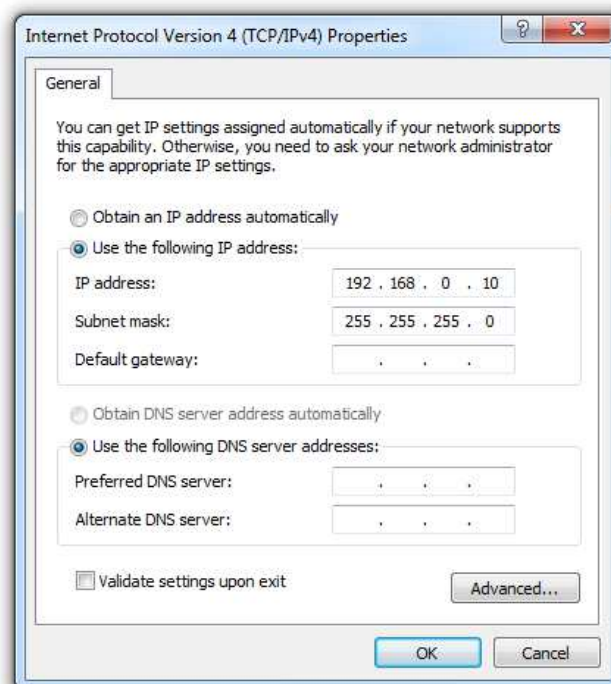


Select the network adapter where the MP-Box is connected with the right mouse button and press "PROPERTIES". Select the list entry "INTERNET PROTOCOL VERSION 4 (TCP/IPv4)" and press "PROPERTIES". Set up the IP address 192.168.0.10. Change the subnet mask to 255.255.255.0.

The setup of the network adapter is now complete.

### Hint:

Please make sure that the clinic network is not in the address range 192.168.0.\*.



## 4.5 Configure the WiFi Access point

The WiFi Access point is delivered with a working configuration. There are no adjustments required. The following settings are factory-set:

IP address: 192.168.0.25  
 Username: admin  
 Password: <empty>

### Hint:

Please make sure the MP-Box is switched on when accessing the WiFi Access point.

### Hint:

To activate configuration changes you have to enter the "CONFIGURATION" menu and select "SAVE AND ACTIVATE" finally.

### 4.5.1 LAN configuration

### 4.5.2 WiFi configuration

The password for the WiFi connection is "protecrapixx".

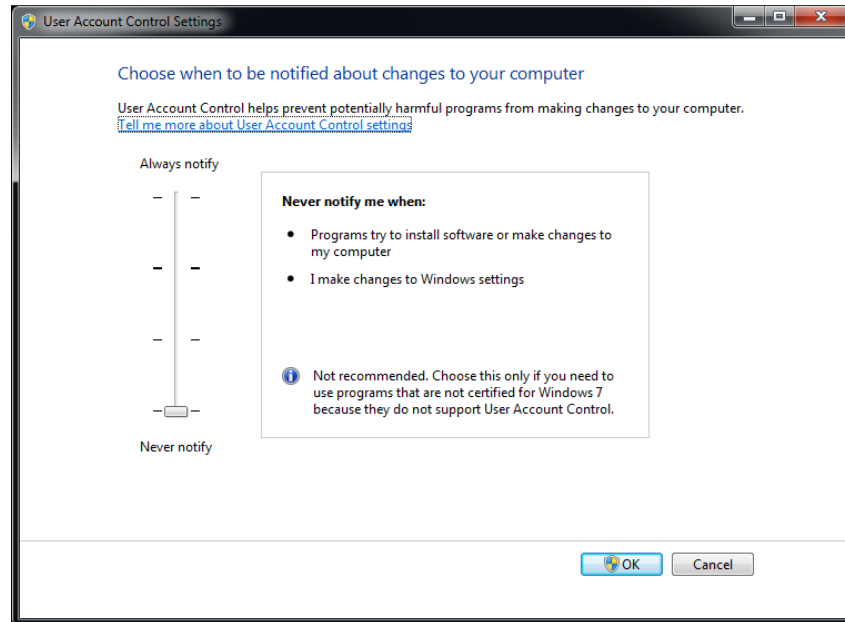


## 4.6 Change Windows settings

### 4.6.1 Deactivate the User Account Control

Go to the "CONTROL PANEL", open "USER ACCOUNTS" and select "CHANGE USER ACCOUNT CONTROL SETTINGS".

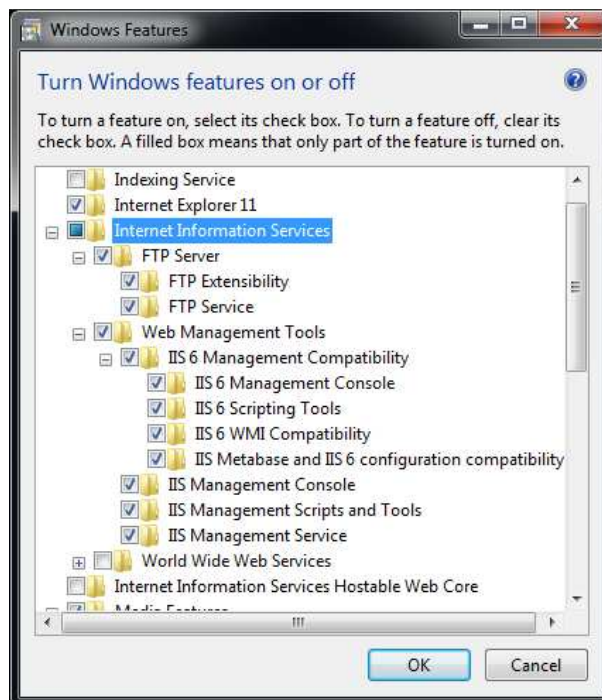
Deactivate the User Account Control by moving the slider to the bottom.



### 4.6.2 Activate Windows features

Go to the "CONTROL PANEL", open "PROGRAMS AND FEATURES" and select "TURN WINDOWS FEATURES ON OR OFF".

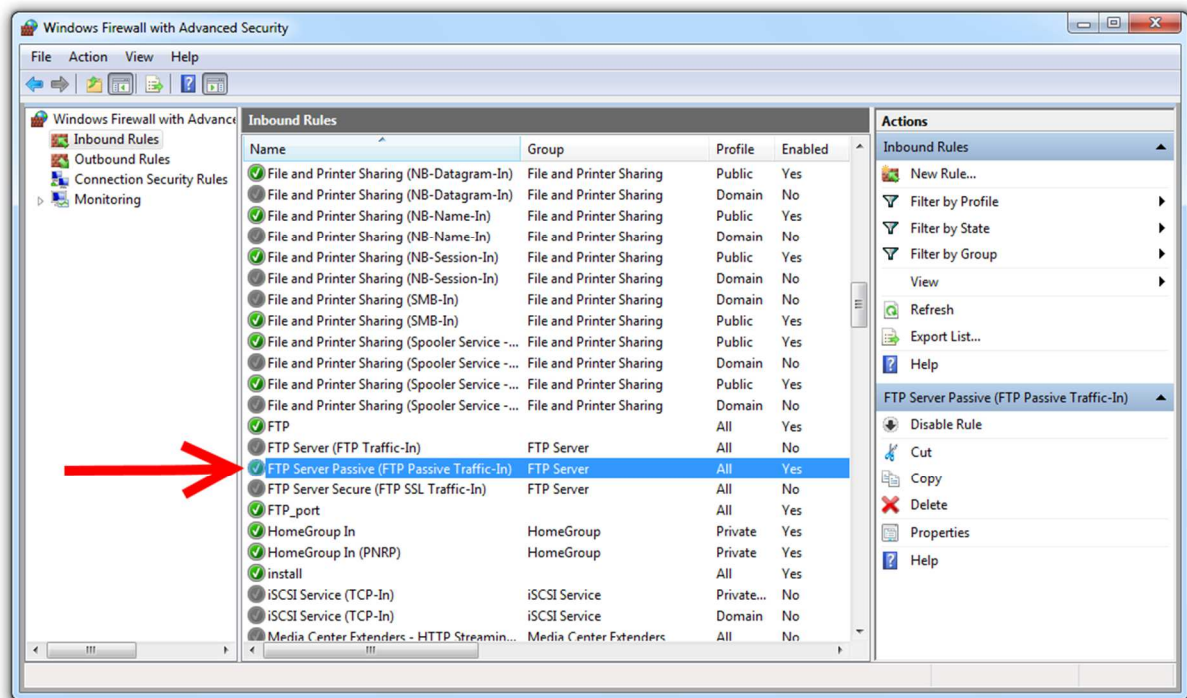
Select in the section "INTERNET INFORMATION SERVICES" all sub-items of "FTP Server" and "WEB MANAGEMENT TOOLS".



### 4.6.3 Setup the Windows Firewall

In case of using the Windows Firewall, you have to active a firewall rule. Go to the "CONTROL PANEL", open "WINDOWS FIREWALL" and select "ADVANCED SETTINGS".

Activate the rule “FTP SERVER PASSIVE (FTP PASSIVE TRAFFIC-IN)” by using the context menu.



## 4.7 Installation of the Detector DVD

Insert the Detector DVD into the disc drive (e.g. D:\) and start the setup process:

For Windows 32bit: D:\Installer\x86\setup.exe

For Windows 64bit: D:\Installer\x64\setup.exe

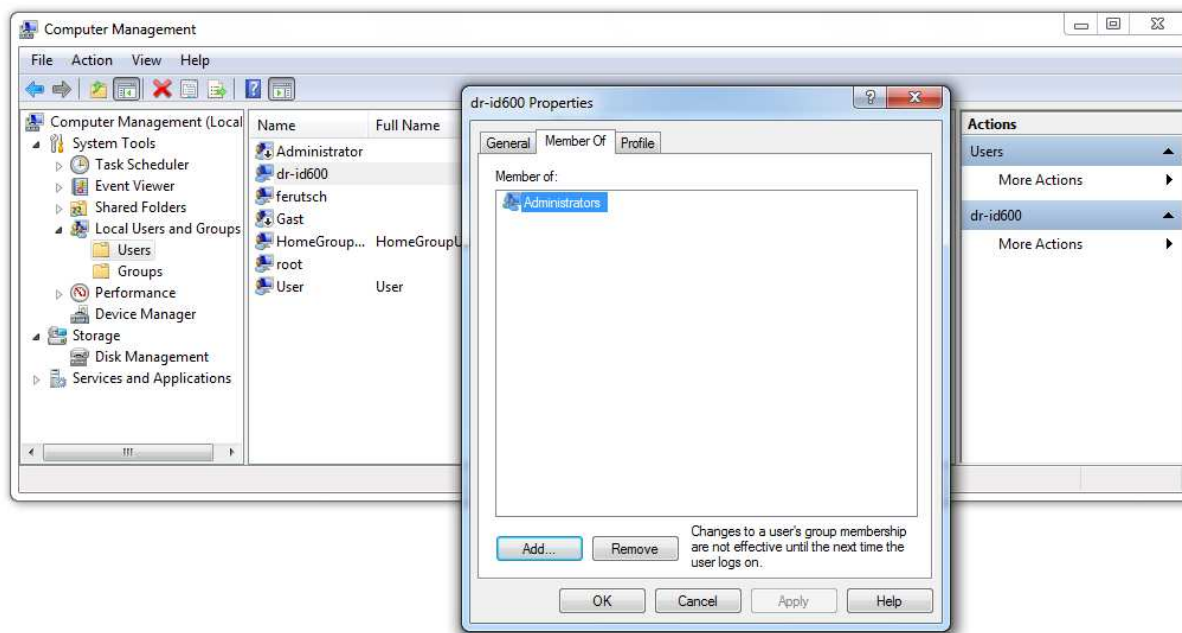
Please follow the screen instruction and restart the computer afterwards.



## 4.8 Change the user group

When using a Windows version with English language it is not necessary to change the user group. For all other languages, please perform the following steps:

Go to the "CONTROL PANEL", open "ADMINISTRATIVE TOOLS", open "COMPUTER MANAGEMENT", select "ADVANCED SETTINGS", select "LOCAL USER AND GROUPS" and select "USERS". Open the context menu of the user "DR-ID600" and select "PROPERTIES". Activate the tab "MEMBER OF" and make sure that the user is member of the user group "ADMINISTRATORS". The user group "Administrators" is named different in every other language than English.



## 4.9 Installation of CONAXX 2

Install CONAXX 2 from the delivered CONAXX 2 CD. Make sure that the correct driver e.g. "RAPIXX 4343M2F WiFi" is selected in the section "DRIVERS".

Restart the computer afterwards.

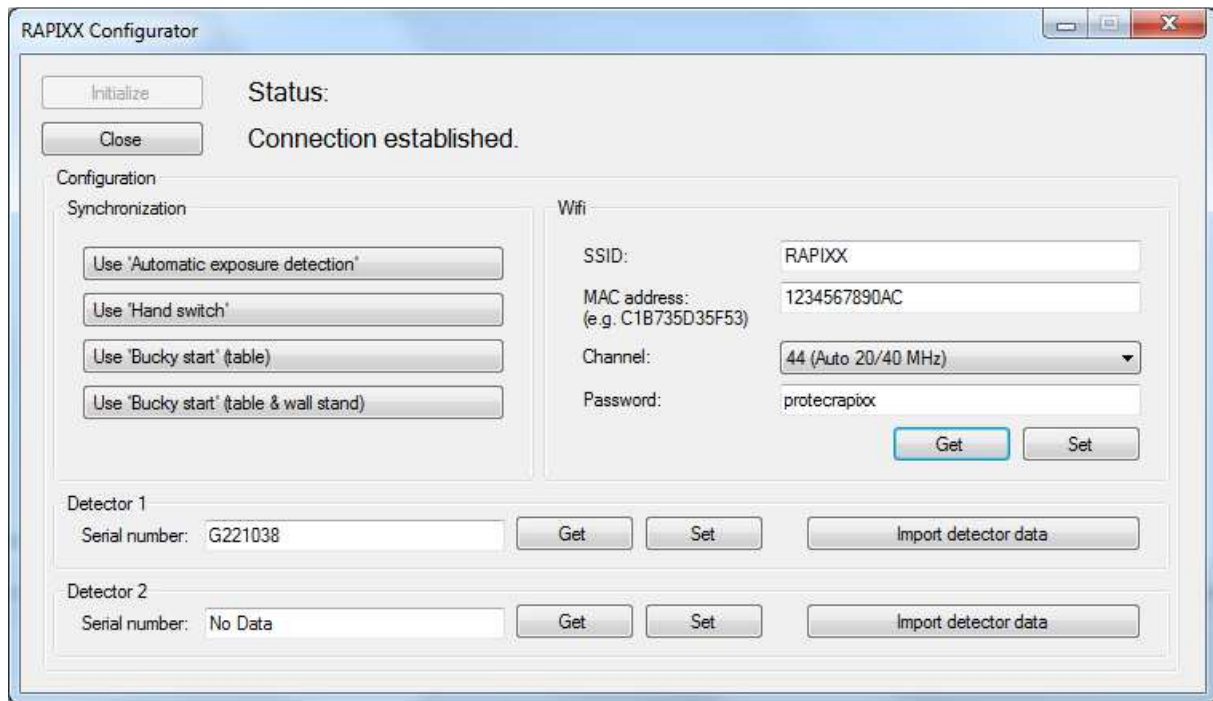
### Note:

Check the "CONAXX 2 Installation Manual" for detailed CONAXX 2 installation information.

## 4.10 Configuration of the detector

To start the configuration make sure that the MP-Box is switched on and the detector cable is connected to the detector.

Start the "RAPIXX CONFIGURATION" from the start menu folder "CONAXX2\DR-PANEL". Click "INITIALIZE" to establish the connection to the detector.



#### 4.10.1 Synchronization

Choose in the section "SYNCHRONIZATION" the used synchronization type (Automatic exposure detection, hand switch or Bucky Start signal).

#### 4.10.2 Wifi

Configure the WiFi Access point parameters for the WiFi connection. You find the "MAC ADDRESS" on the access point's label.

#### 4.10.3 Register the detector

To register a detector enter its serial number (e.g. G221038) into the section "DETECTOR 1" and confirm with "SET". You find the serial number on the Detector DVD. Use "GET" to check that the serial number is registered correctly. In case of having second detectors, register the second one in the section "DETECTOR 2".

After the registration import the detectors specific data with the button "IMPORT DETECTOR DATA". For that you have to choose the disc drive where the Detector DVD is inserted. Use the function "IMPORT DETECTOR DATA FROM BACKUP" to import the calibration backup.

To finish the configuration close "RAPIXX CONFIGURATION" by clicking "CLOSE".

## 4.11 First start of CONAXX 2

Start CONAXX 2 with a double click on the desktop icon. Check the document "CONAXX 2 User Manual" for more details.

### 4.11.1 Necessary settings in CONAXX 2

After the first start of CONAXX 2 open the configuration by clicking the button "CONFIGURATION" in the start menu of CONAXX 2 and change into the section "SYSTEM > MODALITY".

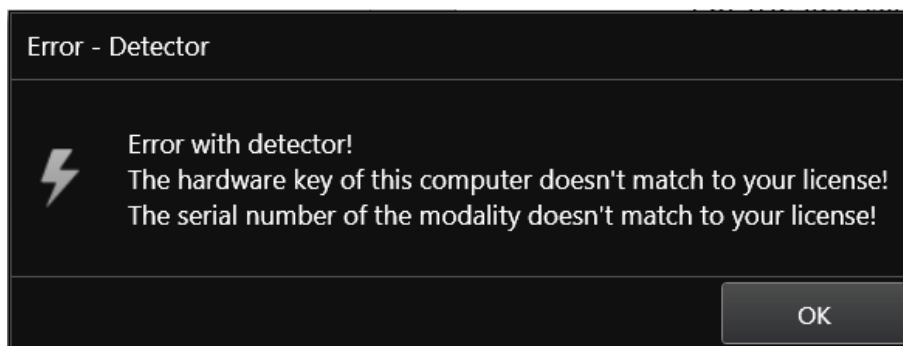
Select under "MODALITY" the used detector, e.g. "RAPIXX 4343M2F WiFi"

Depending on how the detector is built in, it might be necessary to rotate the acquired images in COANXX. This can be configured under "ROTATIONS" in the same configuration section.

Now restart CONAXX 2.

### 4.11.2 Licensing of CONAXX 2

After the restart of CONAXX 2 a message that the license does not fit to the system appears.

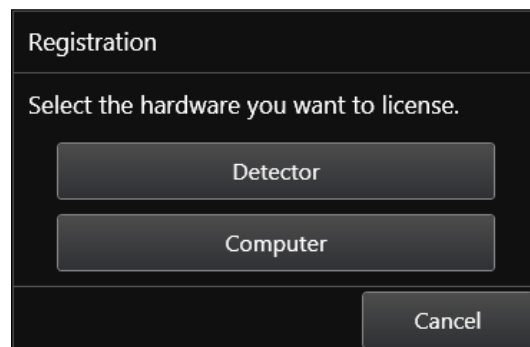


Confirm this message.

#### Note:

For the licensing procedure it is necessary that CONAXX 2 can communicate with the detector. Please do not change the system environment (network card, connected detectors ...) because this can make the license invalid. In case of using more than one detector please connect all detectors to the computer.

Open the configuration of CONAXX 2 by clicking the button "CONFIGURATION" in the start menu of CONAXX 2 and change into the section "SYSTEM > REGISTRATION". In the section "GENERATE HARDWARE KEY" select the function "SAVE KEY AS..." to create a license request. In the next step please choose the type of licensing.



CONAXX 2 supports two different types of licensing:

Type of licensing	Properties
Detector-based	This type will linking the license with the detector.

Computer-based	This type will linking the license with the computer.
----------------	---

In case of having no question to choose the type of licensing, the detector supports computer-based licensing only.

**Note:**

The module "Advanced image processing (AIP)" is always linked to the computer. It is not possible to use it on other computers, even if the detector-based licensing is used.

There are two ways to send the hardware key:

- Online with the licensing page of the dealer backroom or
- by e-mail

For the online licensing, please login to the dealer backroom and navigate to the page "LICENSING". Select the desired license and upload the hardware key with the function "SET". Download the license afterwards with "GET".

For the licensing by e-mail, send the hardware key to [mis@protec-med.com](mailto:mis@protec-med.com). You will then get the valid license key by e-mail.

This license file can be imported with the function "Import license..." in the section "SYSTEM > REGISTRATION" of the CONAXX 2 configuration.

Now restart CONAXX 2. CONAXX 2 is now ready to acquire images with the detector. The proceeding with the DR system is described in the document "CONAXX 2 User manual".

## 4.12 Setup dose indicator for detector

For each detector the document "RAPIXX calibration values" is included. Follow the instructions in the document to setup the dose indicator.

## 5 Calibration of the DR System

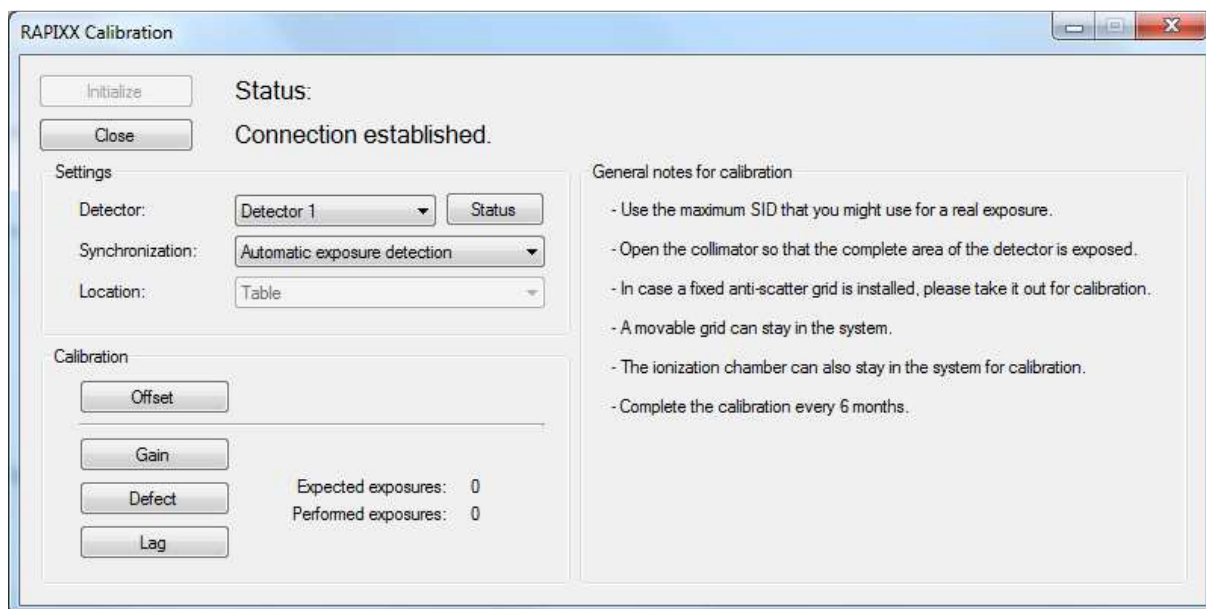
### Note:

For the calibration make sure that the detector runs at least 2 hours so that a sufficient operating temperature is reached.

General notes for calibration:

- Use 1.8m SID.
- Make sure that the exposure duration is smaller than 200ms.
- Open the collimator so that the complete area of the detector is exposed.
- In case of using a portable detector at different locations, perform the calibration on the table.
- In case of using a fixed detector with a fixed anti-scatter grid, remove the grid.
- In case of using a fixed detector with ionization chambers, do not remove the chambers.
- Perform the calibration every six months.

Go to "START MENU" and open in the folder "CONAXX2\DR-PANEL" the program "RAPIXX CALIBRATION". Make sure that you configured the detector connection in CONAXX 2 successfully.






Click "INITIALIZE" to establish the connection to the detector. Select the detector, the type of "SYNCHRONIZATION" and the "LOCATION" in the section "SETTINGS".

The section "CALIBRATION" provides four different calibration types. Perform all types according to following exposure specifications.

**Hint:**

The X-ray parameter mAs is only a suggestion and can differ at each X-ray system. Important is the received dose ( $\mu\text{Gy}$ ) at the detectors surface. Please use a measurement device to find out the correct values for mAs.




Calibration	Exposures	X-ray parameters			Received dose ( $\mu\text{Gy}$ )
		kV	mAs	Focus	
„OFFSET“	0	-	-	-	-
„GAIN“	16	75	6.4		89
„DEFECT“	5	75	3.2		44
„LAG“	1	80	50		810

To back up the calibration click "BACKUP".

To finish the calibration close "RAPIXX CALIBRATION" by clicking "CLOSE".

## 6 Status information

### 6.1 Status LEDs of the detector

LED	Status	Wireless connection	Wired connection
<b>POWER</b> 	Lit	Power ON	Power ON 10 minutes of more charge time
	Flashing	-	Power ON Less than 10 minutes charge remaining
	Unlit	Power OFF	Power OFF No charge remaining
<b>READY</b> 	Lit	Exposure possible	Exposure possible
	Flashing	Exposure in progress	Exposure in progress
	Unlit	Standby or detector not recognized	Standby or detector not recognized
<b>ERROR</b> 	Lit	Communication error	Communication error
	Flashing	Hardware error	Hardware error
	Unlit	No error	No error



**Observe following notes when there are permanent problems with the wireless connection:**

- **Is any obstacle, which is in the transmission path, reducing the signal?**
- **Is there a jammer close to the wireless connection (mobile or DECT phone, baby monitor, wireless speakers etc.)?**
- **Is the wireless function switched on at the detector?**

### 6.2 Status area of CONAXX 2

This area provides status information and tools for different components:



- **System:**  
This functions shows status information of the system (e.g. used disk space)



- **Modality:**  
This function opens the tool box for the connected modality. It provides functions to recover or close the connection to the modality, calibration functions or status information for the battery charge level.

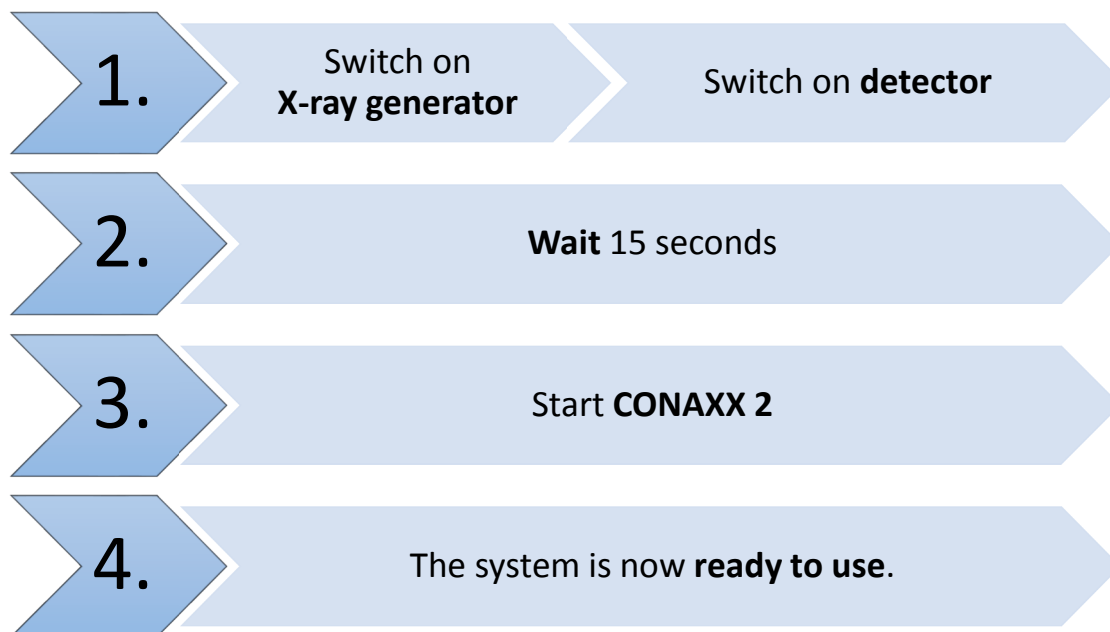


- **X-ray generator:**  
This functions opens the x-ray generator control. It can be used for exposures without using the modality.

## 7 Handling of the RAPIXX 4343M2F Wifi system

### 7.1 Operation of the RAPIXX DR system

#### 7.1.1 Startup order for daily use



If CONAXX 2 cannot connect to the modality or generator after launching the program there will appear an error message. In this case, CONAXX 2 has to be restarted to initiate a new connection. Further hints you can find in the indicated error message.

If no error message appears after starting the program, the connection was established successfully.

#### 7.1.2 Error during operation with the X-ray generator

Should an error appear during the daily operation with the X-ray generator, the error message will show hints to solve the problem.

Is the connection to the generator during operation with CONAXX 2 interrupted, CONAXX 2 has to be restarted to establish a new connection. If no error message appears after the restart, the connection has been established successfully and the generator can be used.

#### 7.1.3 Error during operation with the modality

Should an error appear during the daily operation with the modality (e.g. communication error, power blackout), the error message will show hints to solve the problem.

Is the connection to the modality during operation with CONAXX 2 interrupted, CONAXX 2 has to be restarted to establish a new connection. If no error message appears after the restart, the connection has been established successfully and the modality can be used.



## 7.2 Operation of the CONAXX 2 software

Detailed information please find in the enclosed user manual of the CONAXX 2 software.

### Note

**To keep the image quality and the battery power in wireless detector systems optimally, it is recommended to click the “Start exposure” button in the CONAXX 2 software first, when everything is prepared for the exposure (e.g. patient positioning) and the X-ray system is ready to release.**

## 7.3 Operation of the detector with accessories

Detailed information please find in the enclosed original user manual *DR-ID 670 Operation Manual* of the detector manufacturer.

### 7.3.1 Handling and change of the battery

Detailed information about the handling of the battery and the battery charger, as well as the battery change, please find in the enclosed original user manual *DR-ID 670 Operation Manual* of the detector manufacturer.



#### Caution!

**In case of receiving technical incorrectly images (e.g. missing image content, stripes structures) the complete X-ray system must be restarted. Please make afterwards a test exposure without any patient. For a further regularly usage of the system please ensure that the taken exposure is correct. If not inform your technical contact person.**

## 8 Safety and Maintenance

### 8.1 Introduction

In this chapter, you will find details regarding safety and maintenance, which is required to ensure the correct and reliable function of the system after the initial installation.

### 8.2 Cleaning and disinfection

To clean the outer surfaces, use commercially available ethanol papers for disinfection or a cleaning cloth tightly wrung out of ethanol (or diluted neutral detergent).



#### Caution!

**The use of corrosive or abrasive cleaning agents as well as solvents is not allowed. These materials can cause damage to the outer surface of the unit or to the coating of the individual components.**

**Do not use an excessive amount of ethanol (or neutral detergent), as doing so may allow the liquid to enter from the gap on the outer surfaces, resulting in the damage to the flat panel sensor, or cause the labels to come off.**

**Do not use a solvent such as thinner or benzene, as it corrodes the outer surfaces.**

### 8.3 Checkup and maintenance

#### 8.3.1 Daily controls prior to or during the unit operation

The detector surface must be daily checked before operating start if there are any visible damages. In case of visible damages, a technical homogeneity X-ray (without any patient) should be taken to ensure that the damages are not visible inside the image. If damages are visible inside the image, please contact a PROTEC dealer.



**If the shock sensor lights red, contact a PROTEC dealer.**

#### 8.3.2 Safety-related controls

In the interest of the safety of the patient, operator and external 3<sup>rd</sup> parties, the check /control activities related to maintaining the operational safety and /or functionality of the unit are required to be undertaken in regular **12 month** intervals by the **PROTEC** service department or a **PROTEC** authorized service provider. This includes the control of the image quality as well.

It is recommended to calibrate the RAPIXX DR system every six months at least. The instruction for the calibration you can find under the chapter *5 Calibration of the DR system* in this manual.

#### 8.3.3 Maintenance



**Before opening the device always switch off the device, pull out the mains plug and check that the parts are de-energised.**

**Secure the device against restarting.**

The required maintenance and inspection must be completed every 12 months by the PROTEC service department or a **PROTEC** authorized service provider in order to ensure the reliable operation of the unit.

As the manufacturer, PROTEC is responsible for safety-related characteristics/performance of the unit as long as the maintenance, repair and corresponding changes are undertaken by PROTEC or an expressly by PROTEC authorized technicians and when components (related to the safety of the unit) are replaced, in the case of component failure, with original spare parts.



**Only use original spare parts in case of component replacement is required.**

In the case that the required maintenance is not completed as intended, **PROTEC** is no longer responsible for damages/injury to the operator and/or third party, provided that the damage is the result of improper or missing maintenance.

Prior to operation (creation of X-Ray images), the operator must ensure that all safety related mechanisms, indicators and/or switches described within the user manual are fully functional and that the RAPIXX DR system is overall operationally ready.

**Detailed information about safety and maintenance you can find in the enclosed original user manual *DR-ID 670 Operation Manual* of the detector manufacturer.**

## 9 Liability

We hereby expressly point out, that under following mentioned situations any liability of PROTEC is excluded:

- Breach of maintenance intervals
- Operation by not trained staff
- Service and maintenance work not made by PROTEC service department or PROTEC authorized service technicians.

## 10 Guarantee

A 24-month full guarantee of the material and relevant corresponding components, for the entire contents of delivery, is granted from the delivery date (date the product leaves the factory). All repairs and replacement of components because of misuse and/or incorrect operation are excluded from the guarantee. PROTEC service department or PROTEC authorized technicians may only do service and maintenance work.

## 11 Disposal



Do not dispose the RAPIXX DR system with household waste. All mechanical and plastic components are to be disposed of in accordance with the corresponding national guidelines. Correctly disposing of this product will help to save valuable resources and prevent any potential negative effects on human health and the environment, which could otherwise arise from inappropriate waste handling. In cases of any doubt, contact PROTEC.

## 12 Electromagnetic compatibility (EMC) according to EN 60601-1-2

### 12.1 General












- The RAPIXX DR system is, as a medical electric device, subject to particular precautionary measures in regard to EMC and is required to be installed and prepared for initial use as described within the accompanying documents.
- Portable and mobile HF- communication units can have an influence upon medical electric devices
- The RAPIXX DR system sends out electromagnetic waves during operation, which could cause interference with other devices or it could be interfered by other devices.

### 12.2 Detector with accessories

Detailed information to the electromagnetic compatibility of the detector and its accessories you can find in the enclosed original user manual *DR-ID 670 Operation Manual* of the detector manufacturer.

## 13 Description of symbols and abbreviations

### 13.1 Symbols

	Attention, consult accompanying documents
	Refer to user manual
	CE-Mark
	Classification according to EN 60601-1 (Type B)
	Electrostatic sensitive device
	Large focus
	Small focus
	System (CONAXX 2)
	Modality (CONAXX 2)
	X-ray generator
	Electrical product. Do not dispose in the household waste.

### 13.2 Abbreviations

mm	Millimeter
cm	Centimeter
lb.	Pound
kg	Kilogram
°C	Degree -Celsius
hPa	Hectopascal
DIN	German Industry Standard
EN	European Standard
CE	CE-Mark
Hz	Hertz
ED	Duty cycle
A	Ampere
SN	Serial number